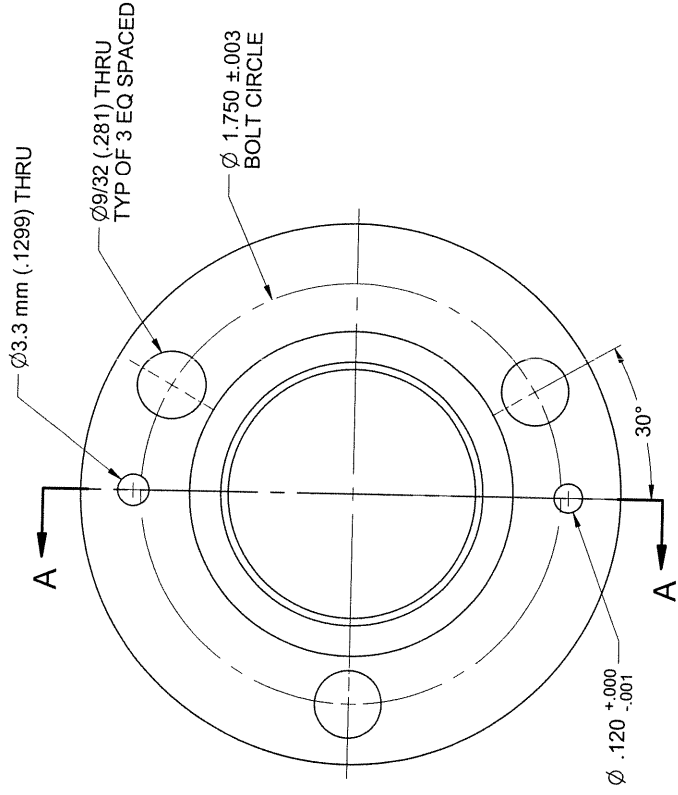
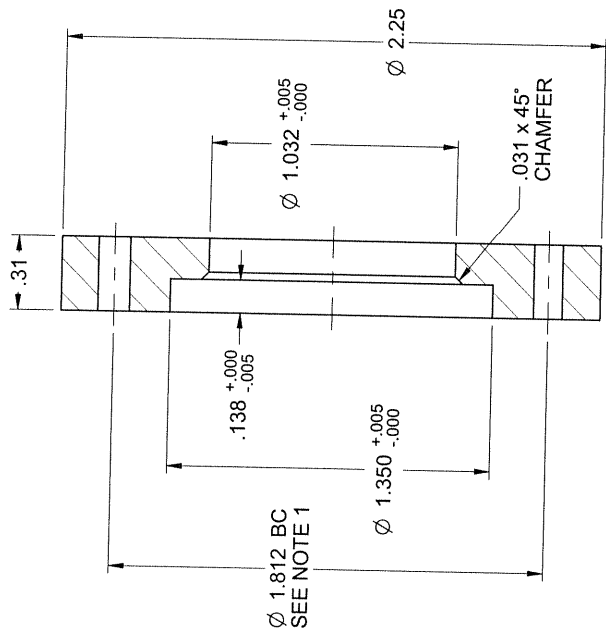


REV: SHEET	REVISION NOTE		DATE APPR
D	CAD MAINTAINED. CHANGES SHALL BE INCORPORATED BY THE DESIGN ACTIVITY. DRAWING RELEASED AS WRONG REV. NO ECO NEEDED AND NO CHANGE TO DRAWING		2/15/2006
	ECO		



**PLAN VIEW**



**SECTION A - A**

Ø2.25 BRASS ROD  
(3100225000)

WAS PART OF DIELECTRIC DWG A4121

STATUS: RELEASED		DIMENSIONAL TOLERANCES (UNLESS OTHERWISE NOTED)		Dielectric A Unit of SPX Corporation Raymond, ME	
PART NO:	0004121003	DECIMAL DIMENSIONS	± .005	TITLE:	FLANGE CLAMPING
MATERIAL:	Brass	FRACTIONAL DIMENSIONS	± .005	7/8	
FINISH:		FRACTIONAL DIMENSIONS	± .005		
		0" - 6"	± .1/32"		
		ABOVE 6" UP TO 12"	± 1/16"		
		ABOVE 12" UP TO 48"	± 1/8"		
		ABOVE 48" UP TO 96"	± 1/4"		
		REFERENCE DIMENSIONS ARE NOT FOR			
		MANUFACTURING OR INSPECTION			
		ANGLE PROJECTION			
DESIGNED BY	Jim Querin	DATE	2/15/2006	GAGE CODE	B 08441
DETAIL BY	Jim Querin		2/15/2006	DRAWING NO:	006A47707
CHKD BY	Robert Cummins		2/15/2006		
ENG - 1 APPR	N/A		2/15/2006		
ENG - 2 APPR	N/A		2/15/2006		
MANUFACT.	N/A		2/15/2006		
					SHEET: 1 OF 1

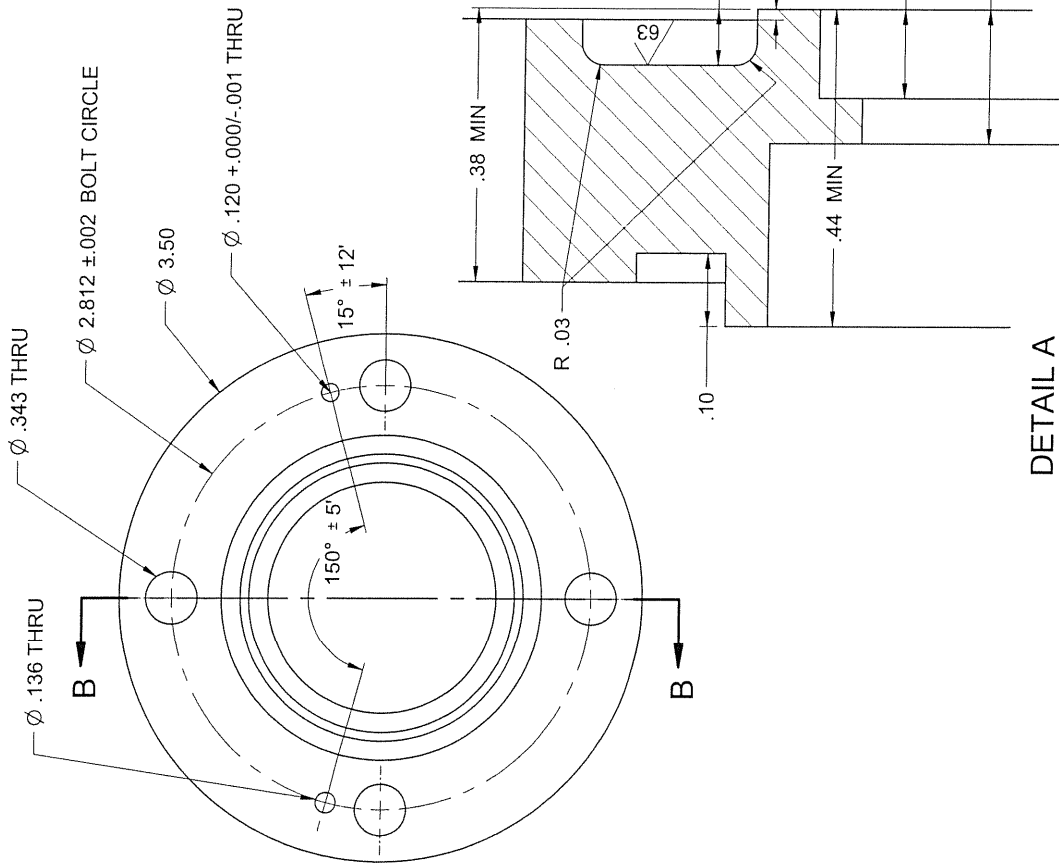
NOTES:

- THESE HOLES MUST BE DIAMETRICALLY OPPOSITE TO WITHIN +/- .003

**COMPANY CONFIDENTIAL.** INFORMATION CONTAINED HEREIN IS CONFIDENTIAL. IT IS THE PROPERTY OF SPX CORPORATION. IT IS TO BE USED SOLELY FOR THE PURPOSE PROVIDED. AND IT IS NOT TO BE DISCLOSED TO OTHERS WITHOUT THE PRIOR WRITTEN CONSENT OF SPX CORPORATION.

**UNLESS OTHERWISE SPECIFIED**  
MANUFACTURING TOLERANCE AND PROCEDURES MUST BE IN ACCORDANCE WITH D78691 ALL ALUMINUM, COPPER, AND BRASS WELDING MUST COMPLY WITH A-62706, SECT. XIV. "PRODUCTION WELDING PROCEDURES". STRUCTURAL STEEL WELDING MUST COMPLY WITH "AWS 1.1" CURRENT REVISION.

REV. SHEET	CAD MAINTAINED. CHANGES SHALL BE INCORPORATED BY THE DESIGN ACTIVITY.	ECO	DATE APPR
D	PUT ALL PARTS ON SEPARATE DRAWINGS		10/12/2004



SECTION B-B

STATUS: RELEASED	DESIGNED BY: Adam J. Richard	DATE: 11/23/2004
PART NO: 0006295003	CHKD BY: Jack C. N/A	11/25/2004
MATERIAL: BRASS FM ALLOY C36000	ENG. 1 APPR: N/A	10/12/2004
	ENG. 2 APPR: N/A	10/12/2004
	MANUFACT: N/A	10/12/2004

DIMENSIONAL TOLERANCES (UNLESS OTHERWISE NOTED)		
3 PLACE DIMENSIONS	± .005	
2 PLACE DIMENSIONS	± .02	
FRACTIONAL DIMENSIONS	0'-6" ± 1/32"	
ABOVE 6" UP TO 12"	± 1/16"	
ABOVE 12" UP TO 48"	± 1/8"	
ANGULAR DIMENSIONS	± 12'	
REFERENCE DIMENSIONS ARE NOT FOR MANUFACTURING OR INSPECTION		
ANGLE PROJECTION		
FIRST ANGLE		

Dielectric A Unit of SPX Corporation	
TITLE: Flange Fixed 1 5/8 UHF HEAVY WALL	
GAGE CODE	DRAWING NO:
B 08441	000A85303

FINISH: N/A	REFER TO D8110 FOR PLATING
	REFER TO D17800 FOR PAINT

SHEET: 1 OF 1	
---------------	--

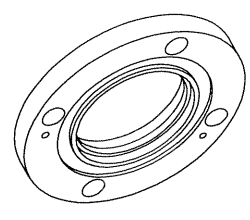
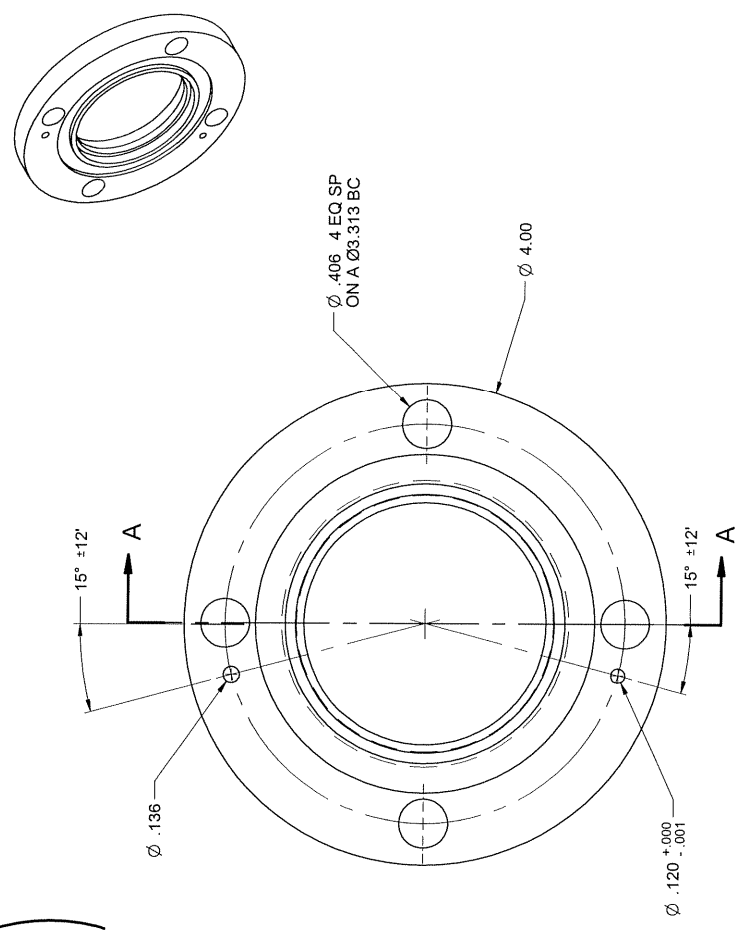
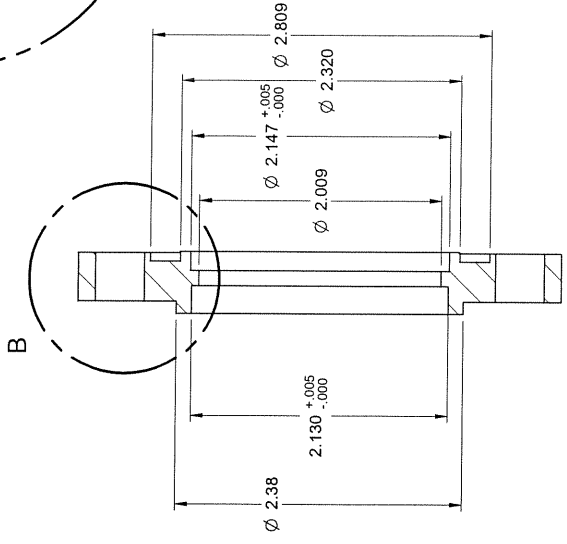
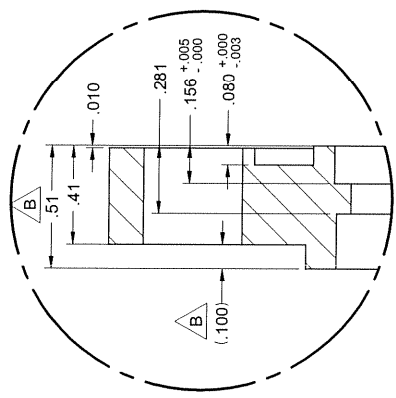
COMPANY CONFIDENTIAL. INFORMATION CONTAINED HEREIN IS CONFIDENTIAL. IT IS THE PROPERTY OF SPX CORPORATION. IT IS TO BE USED SOLELY FOR THE PURPOSE PROVIDED, AND IT IS NOT TO BE DISCLOSED TO OTHERS WITHOUT THE PRIOR WRITTEN CONSENT OF SPX CORPORATION.

UNLESS OTHERWISE SPECIFIED  
MANUFACTURING TOLERANCE AND PROCEDURES MUST BE IN ACCORDANCE WITH D7661. ALL ALUMINUM, COPPER, AND BRASS WELDING MUST COMPLY WITH A-82700, SECT. XIV. PRODUCTION WELDING PROCEDURES. STRUCTURAL STEEL WELDING MUST COMPLY WITH "AWS 1.1. CURRENT REVISION".

DETAIL A

REV: <b>B</b>	SHEET	CAD MAINTAINED. CHANGES SHALL BE INCORPORATED BY THE DESIGN ACTIVITY.	ECO	DATE APPR
		CHANGED WELD LIP FROM .060 TO .100	4176	11/10/2005

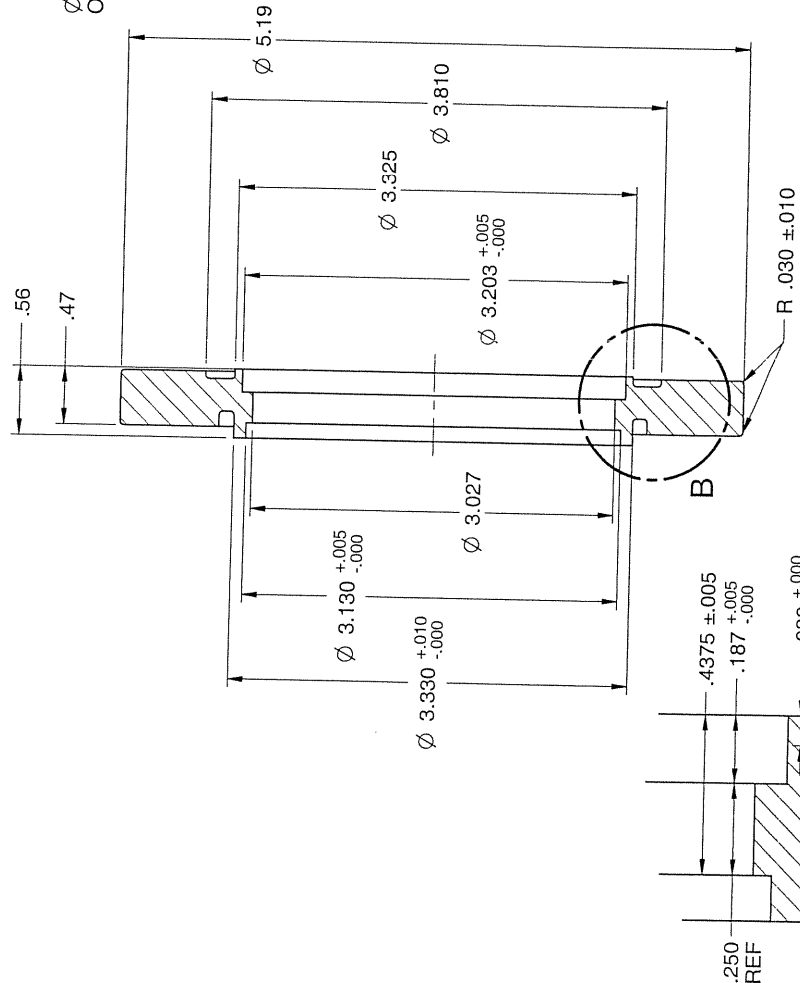
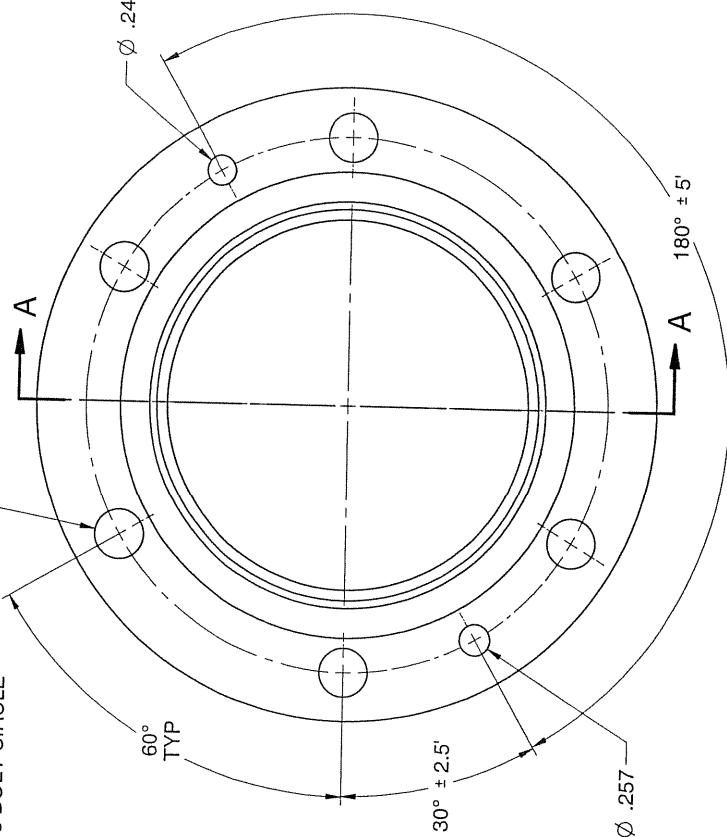
**REVISION NOTE**  
 CAD MAINTAINED. CHANGES SHALL BE INCORPORATED BY THE DESIGN ACTIVITY.  
 CHANGED WELD LIP FROM .060 TO .100



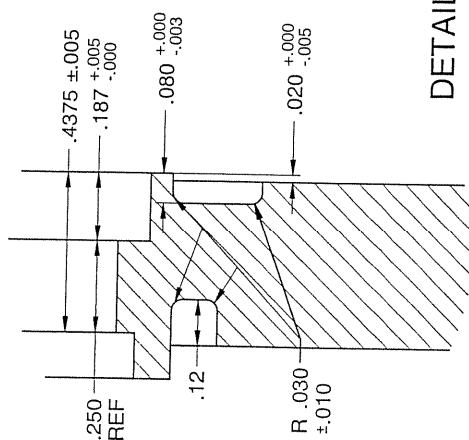
<b>STATUS: RELEASED</b> PART NO: <b>47887</b> MATERIAL: BRASS 36000, FREE MACHINING		<b>DIMENSIONAL TOLERANCES (UNLESS OTHERWISE SPECIFIED)</b> 3 PLACE DIMENSIONS ±.005 2 PLACE DIMENSIONS ±.02 FRACTIONAL DIMENSIONS 0/8" ±.032" ABOVE 0/16" ±.1/16" ABOVE 0/32" TO 0/48" ±.1/16" ABOVE 0/48" ±.1/32" ANGULAR DIMENSIONS ±12° REFERENCE DIMENSIONS ARE NOT FOR MANUFACTURING OR INSPECTION		<b>Dielectric</b> A Unit of SPX Corporation Raymond, ME	
FINISH: N/A DIMENSIONS: N/A DATE: 11/10/2005 DESIGNED BY: RICHARDM CHECKED BY: RICKL ENG. 1 APPR: IDORD ENG. 2 APPR: N/A MANUFACT: DBDG		TITLE: <b>FIXED FLANGE</b> 2 1/8 BRASS		GAGE CODE: <b>B</b> DRAWING NO: <b>08441 000A12801</b> 3:00:02 PM SHEET: 1 OF 1	
<p><b>COMPANY CONFIDENTIAL</b> INFORMATION CONTAINED HEREIN IS CONFIDENTIAL. IT IS THE PROPERTY OF SPX CORPORATION. IT IS TO BE USED SOLELY FOR THE PURPOSE PROVIDED, AND IT IS NOT TO BE DISCLOSED TO OTHERS WITHOUT THE PRIOR WRITTEN CONSENT OF SPX CORPORATION.</p> <p><b>UNLESS OTHERWISE SPECIFIED</b>          MANUFACTURING TOLERANCE AND PROCEDURES MUST BE IN ACCORDANCE WITH D78691. ALL ALUMINUM, COPPER, AND BRASS WELDING MUST COMPLY WITH A-82700, SECT. XIV. PRODUCTION WELDING PROCEDURES. STRUCTURAL STEEL WELDING MUST COMPLY WITH AWS 1.1 CURRENT REVISION.</p>					

REV: <b>A</b>	SHEET	REVISION NOTE CAD MAINTAINED. CHANGES SHALL BE INCORPORATED BY THE DESIGN ACTIVITY. REDRAWN IN SE REF ME10 DRAWING (C 87972 REV C)	ECO	DATE APPR 1/26/2004
---------------	-------	--	-----	------------------------

Ø .406 √ 6 PLACES EQUALLY SPACED  
ON A 4.375 BOLT CIRCLE



SECTION A-A



DETAIL B

STATUS: <b>RELEASED</b>	DIMENSIONAL TOLERANCES (UNLESS OTHERWISE NOTED)		TITLE: <b>FLANGE FIXED DIGIT</b> 3" EIA
	DECIMAL DIMENSIONS	DATE	
PART NO: <b>69417</b>	1 PLACE DIMENSIONS ±.005	DESIGNED BY: Havess	DATE: 1/23/2006
MATERIAL: BRASS FM ALLOY C36000	2 PLACE DIMENSIONS ±.002	DETAIL BY: Richdtdm	1/23/2006
FINISH: N/A	FRACTIONAL DIMENSIONS	CHKD. BY: MikeP	1/23/2004
	0"-6" ±.032	ENG. 1 APPR: N/A	1/23/2004
REFER TO DB110 FOR PLATING REFER TO D17800 FOR PAINT	ABOVE 6" UP TO 12" ±.1/16"	ENG. 2 APPR: N/A	1/23/2004
	ABOVE 12" UP TO 48" ±.1/8"	MANUFACT.:	N/A
	ANGLE PROJECTION		
	ANGLE DIMENSIONS ±.1/2"		
	REFERENCE TO DRAWING OR INSPECTION		
	MANUFACTURING OR INSPECTION		

**Dielectric**  
A Unit of SPX Corporation

GAGE CODE **B 08441**  
DRAWING NO. **001A03701**

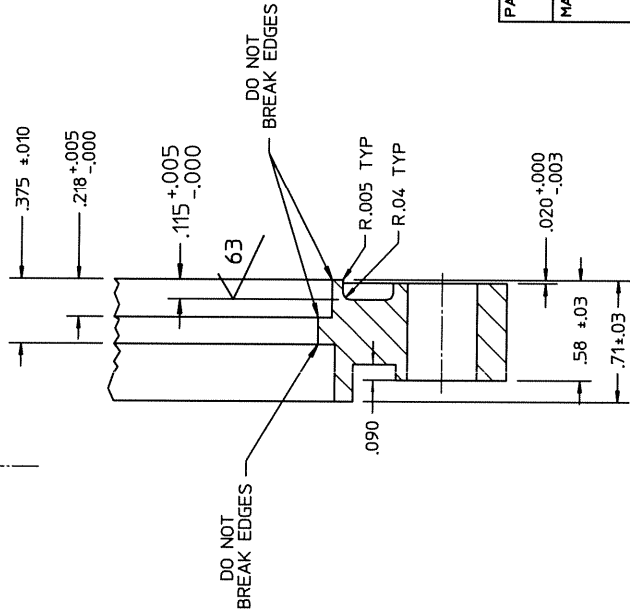
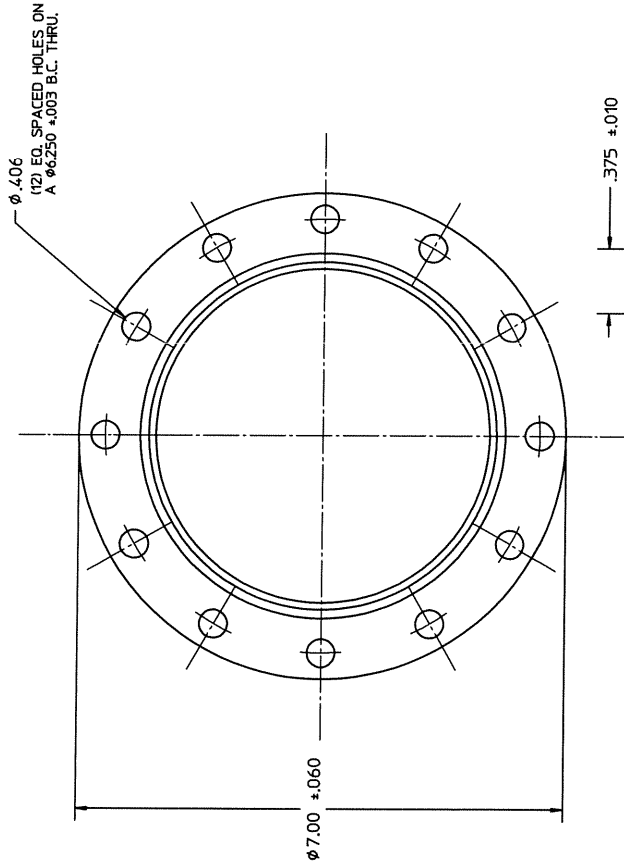
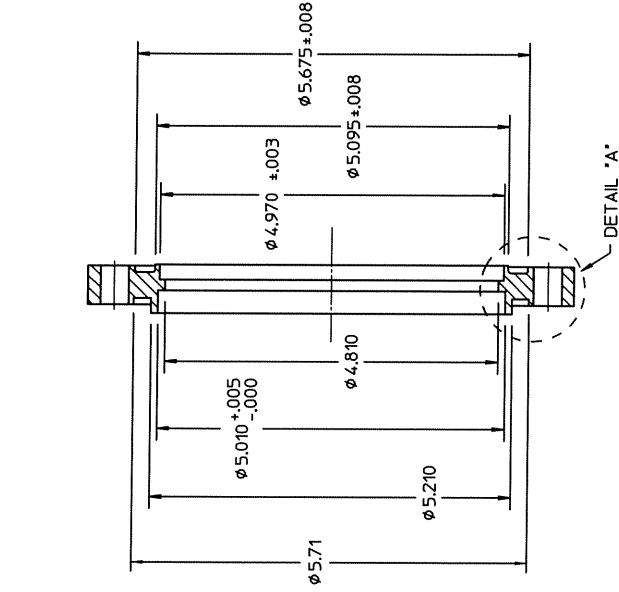
COMPANY CONFIDENTIAL. INFORMATION CONTAINED HEREIN IS CONFIDENTIAL. IT IS THE PROPERTY OF SPX CORPORATION. IT IS TO BE USED SOLELY FOR THE PURPOSE PROVIDED, AND IT IS NOT TO BE DISCLOSED TO OTHERS WITHOUT THE PRIOR WRITTEN CONSENT OF SPX CORPORATION.  
UNLESS OTHERWISE SPECIFIED  
MANUFACTURING TOLERANCE AND PROCEDURES MUST BE IN ACCORDANCE WITH D78691. ALL ALUMINUM, COPPER, AND BRASS WELDING MUST COMPLY WITH A-62700, SECT. XIV. "PRODUCTION WELDING PROCEDURES". STRUCTURAL STEEL WELDING MUST COMPLY WITH "AWS 1.1 CURRENT REVISION".



COMPANY CONFIDENTIAL INFORMATION CONTAINED HEREIN IS CONFIDENTIAL AND IS THE PROPERTY OF SPK CORPORATION. IT IS TO BE USED ONLY FOR THE PROJECT AND IS NOT TO BE DISCLOSED TO OTHERS WITHOUT THE PROOF WRITTEN CONSENT OF SPK CORPORATION.

REVISIONS

SYM	DESCRIPTION	DATE	APPROVED
A	THE +.005/-0.000 TOL WAS +.008/-0.000 ON THE Ø5.010. JPM	12/1/98	BIG RP
B	CHANGED Ø5.260 TO Ø5.210 AND ADDED .09 DP RELIEF NMG	4-7-00	



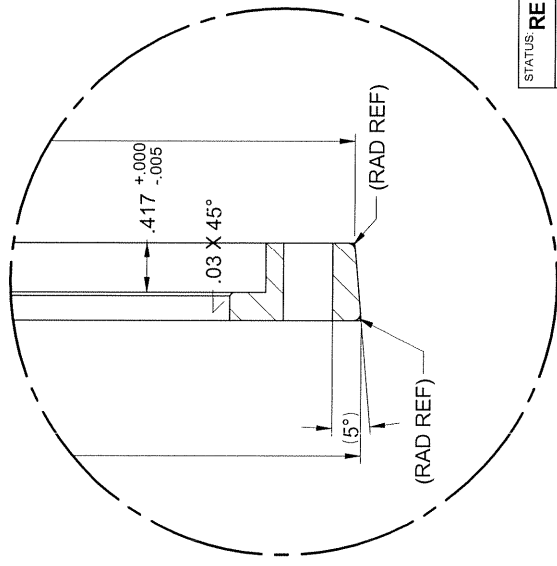
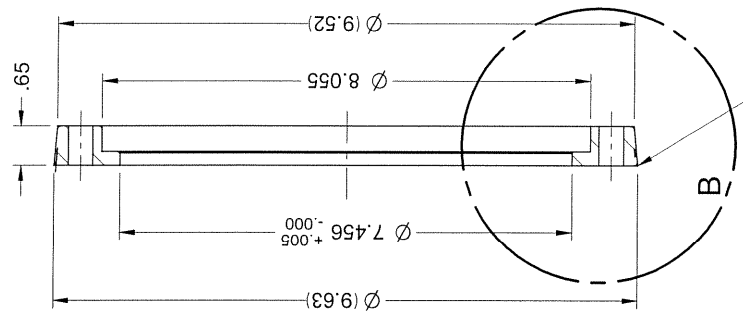
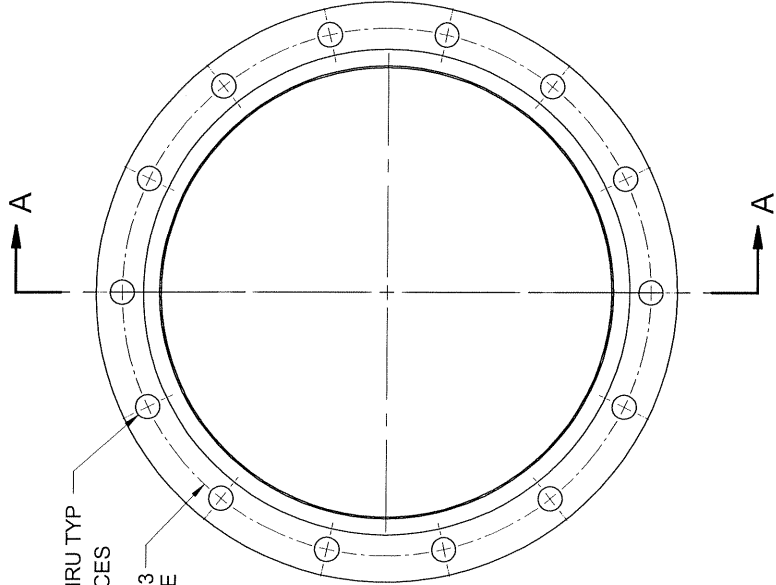
PART NO. 64308  
 TITLE: FLANGE FIXED - 5" EIA STYLE  
 DRN BY: NMG DWG NO: 84774

PART NO. <b>64308</b>	7-Apr-2000 16:12:02 C84774	<b>Dielectric</b> A Unit of SPK Corporation	FLANGE FIXED - 5" EIA STYLE BRASS, UHF TYPE	REV B
MATERIAL BRASS	DIMENSIONAL TOLERANCES (UNLESS OTHERWISE NOTED) 3 PLACE DIMENSIONS ± .005 2 PLACE DIMENSIONS ± .02 ANGULAR DIMENSIONS ± 0°-30' REF DIMENSIONS ARE NOT FOR MANUFACTURING OR INSPECTION	DATE 8-4-98 DRAWN KLORENZ CHECK NMG APPL ENG APPL	CODE IDENT NO <b>08441 C</b>	SCALE
FINISH	DATE 8-4-98 DRAWN KLORENZ CHECK NMG APPL ENG APPL	DATE 8-4-98 DRAWN KLORENZ CHECK NMG APPL ENG APPL	SCALE	SHEET

**DETAIL 'A'**



REV. SHEET	CAD MAINTAINED. CHANGES SHALL BE INCORPORATED BY THE DESIGN ACTIVITY.	ECO	DATE APPR
A	REDRAWN ON SE REF ME10 DRAWING B 83929 REV A		12-14-04



SECTION A-A

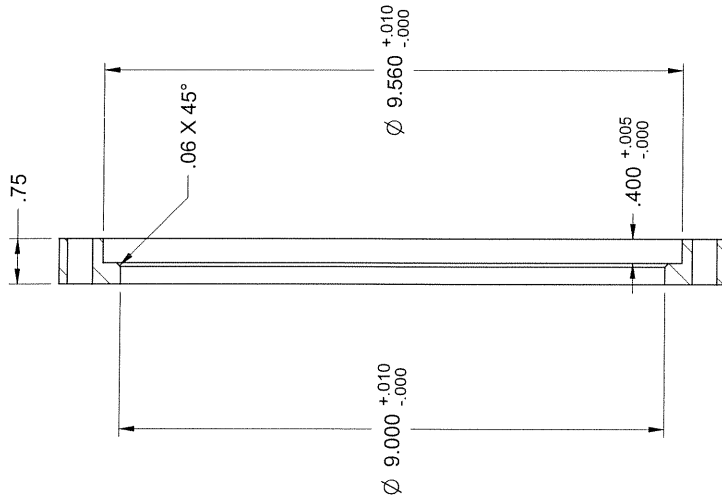
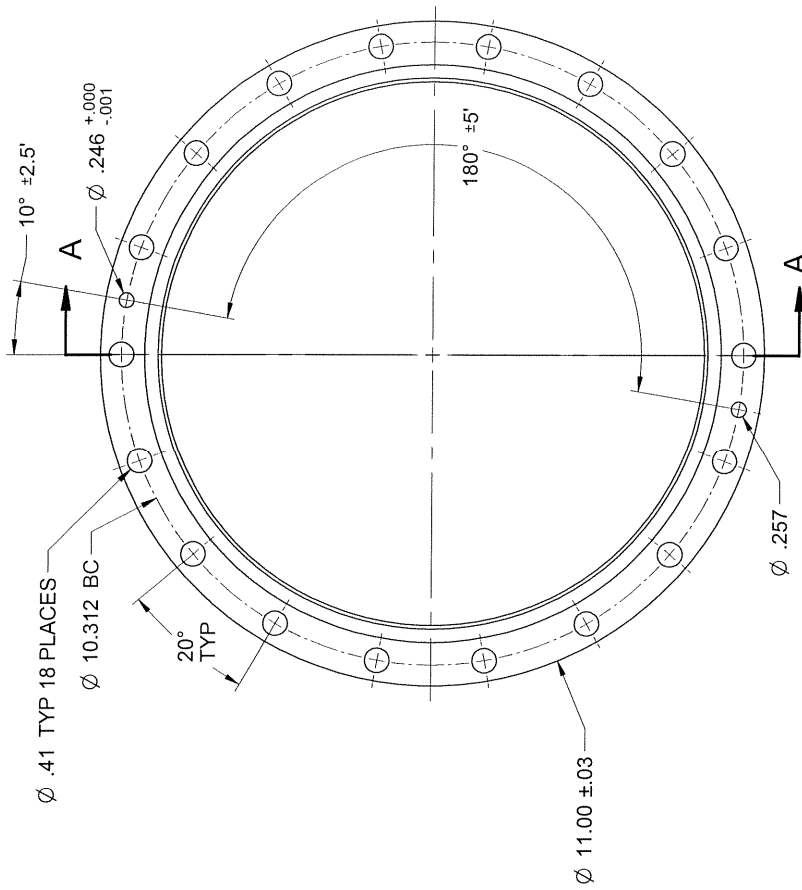
DETAIL B

NOTE:  
 WHEN MAKING THIS PART  
 FROM RAW STOCK HOLD  
 OUTSIDE DIA TO  $\varnothing 9.52$   
 $5^\circ$  TAPER NOT NEEDED

<b>RELEASED</b> PART NO. <b>63087</b> MATERIAL MAKE FROM P/N 61530		<b>DIMENSIONAL TOLERANCES</b> (UNLESS OTHERWISE NOTED) 3 PLACE DIMENSIONS $\pm .005$ 2 PLACE DIMENSIONS $\pm .02$ FRACTIONAL DIMENSIONS $0-.6" \pm .02Z$ ABOVE $12" \text{ UP TO } .48" \pm .016"$ ABOVE $.48" \pm .014"$ ANGULAR DIMENSIONS $\pm 1/2^\circ$ REFERENCE DIMENSIONS ARE NOT FOR MANUFACTURING OR INSPECTION		<b>Dielectric</b> A Unit of SPX Corporation Raymond, ME	
FINISH: CLEAN ONLY		TITLE: <b>FLANGE, CLAMPING</b> 7 3/16 BRASS		GAGE CODE <b>B 08441 003A08901</b>	
DESIGNED BY: richardm DATE: 1/9/2006 DETAIL BY: richardm DATE: 1/9/2006 CHKD BY: jaco DATE: 12/14/2004 ENG. 1 APPE: IVA DATE: 12/14/2004 ENG. 2 APPE: IVA DATE: 12/14/2004 MANUFACT: IVA DATE: 12/14/2004		DRAWING NO. <b>003A08901</b>		SHEET: 1 OF 1	

**COMPANY CONFIDENTIAL.** INFORMATION CONTAINED HEREIN IS CONFIDENTIAL. IT IS THE PROPERTY OF SPX CORPORATION. IT IS TO BE USED SOLELY FOR THE PURPOSE PROVIDED, AND IT IS NOT TO BE DISCLOSED TO OTHERS WITHOUT THE PRIOR WRITTEN CONSENT OF SPX CORPORATION.  
**UNLESS OTHERWISE SPECIFIED**  
 MANUFACTURING TOLERANCE AND PROCEDURES MUST BE IN ACCORDANCE WITH D78691. ALL ALUMINUM, COPPER, AND BRASS WELDING MUST COMPLY WITH A-82700, SECT. XIV "PRODUCTION WELDING PROCEDURES". STRUCTURAL STEEL WELDING MUST COMPLY WITH "AWS 1.1 CURRENT REVISION".

REV: A	SHEET	CAD MAINTAINED. CHANGES SHALL BE INCORPORATED BY THE DESIGN ACTIVITY.	ECO	DATE APPR: 3/9/2005
REVISION NOTE		REDRAWN IN SE REF ME10 DRAWING C23029 REV C1		



SECTION A-A

STATUS: RELEASED  
PART NO: 0023029001

MATERIAL: SEE ABOVE

FINISH: CLEAN ONLY

**DIMENSIONAL TOLERANCES**  
(UNLESS OTHERWISE SPECIFIED)

- DECIMAL DIMENSIONS: 3 PLACE DIMENSIONS ±.005, 2 PLACE DIMENSIONS ±.02
- FRACTIONAL DIMENSIONS: 0"-6" ±.032, 6"-12" ±.063, ABOVE 12" UP TO 48" ±.125, ABOVE 48" ±.156
- ANGULAR DIMENSIONS: ±1/2°
- REFERENCE DIMENSIONS ARE NOT FOR MANUFACTURING OR INSPECTION

ANGLE PROJECTION



DESIGNED BY	NAME	DATE
Richardm	Richardm	1/9/2005
CHKD BY	Lactac	1/9/2006
ENG. 1 APPR	NVA	3/3/2005
ENG. 2 APPR	NVA	3/3/2005
MANUFACT.	NVA	3/3/2005

Raymond, ME

**MAKE FROM 39857 FORGING**

TITLE: FLANGE, CLAMPING

8"

BRASS

COMPANY CONFIDENTIAL. INFORMATION CONTAINED HEREIN IS CONFIDENTIAL. IT IS THE PROPERTY OF SPX CORPORATION. IT IS TO BE USED SOLELY FOR THE PURPOSE PROVIDED, AND IT IS NOT TO BE DISCLOSED TO OTHERS WITHOUT THE PRIOR WRITTEN CONSENT OF SPX CORPORATION.

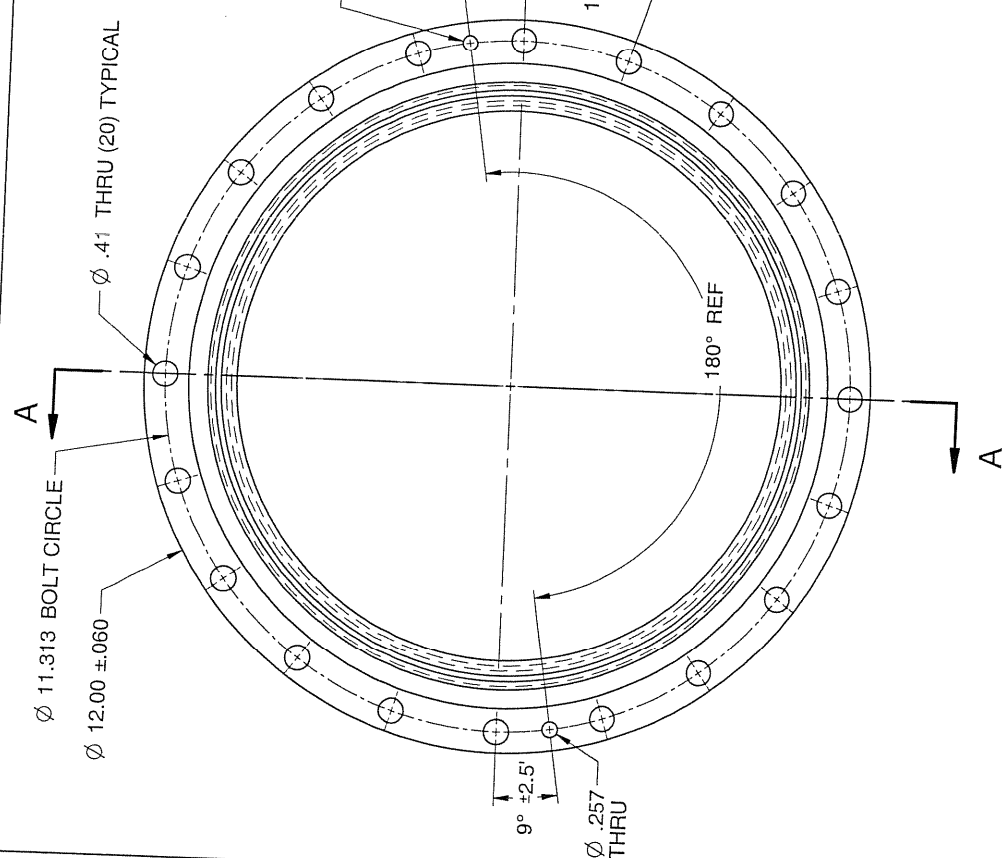
UNLESS OTHERWISE SPECIFIED

MANUFACTURING TOLERANCE AND PROCEDURES MUST BE IN ACCORDANCE WITH D78691. ALL ALUMINUM, COPPER, AND BRASS WELDING MUST COMPLY WITH A-82700, SECT. XIV "PRODUCTION WELDING PROCEDURES". STRUCTURAL STEEL WELDING MUST COMPLY WITH "AWS 1.1 CURRENT REVISION".

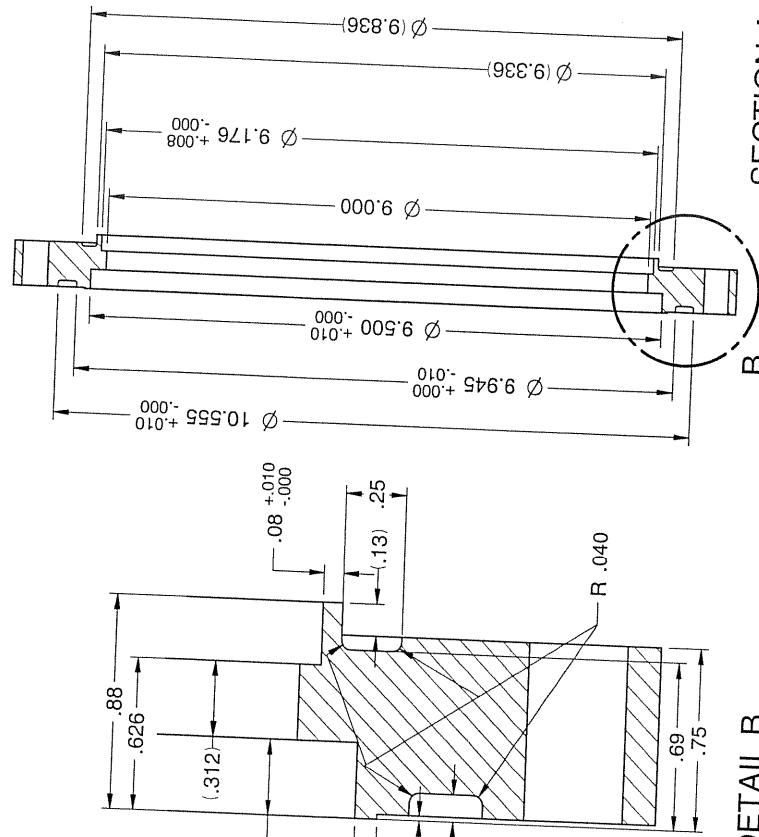
DRAWING NO:

B 08441 003A48501

SHEET: 1 OF 1



REV: <b>A</b>	SHEET	REVISION NOTE	DATE APPR:
		CAD MAINTAINED. CHANGES SHALL BE INCORPORATED BY THE DESIGN ACTIVITY.	ECO
		REDRAWN IN SE REF ME10 DRAWING C 94630 REV-1	9/30/2000



<b>SECTION A-A</b>	
<b>Dielectric</b> A Unit of SPX Corporation Raymond, ME	
<b>TITLE:</b> <b>FLANGE FIXED 9 3/16</b> <b>DIGIT</b>	
$\varnothing$ 9.176 OD TUBE X $\varnothing$ 9.00 ID TUBE	
<b>DIMENSIONAL TOLERANCES (UNLESS NOTED)</b> 3 PLACE DIMENSIONS $\pm$ .005 2 PLACE DIMENSIONS $\pm$ .02 FRACTIONAL DIMENSIONS 0'-6" $\pm$ 1/32" ABOVE 6" UP TO 12" $\pm$ 1/16" ABOVE 12" UP TO 48" $\pm$ 1/8" ABOVE 48" $\pm$ 1/4" ANGULAR DIMENSIONS $\pm$ 1/2° REFERENCE DIMENSIONS ARE NOT FOR MANUFACTURING OR INSPECTION ANGLE PROJECTION	
<b>STATUS:</b> RELEASED	<b>DESIGNED BY:</b> Richardm
<b>PART NO:</b> 79480	<b>DATE:</b> 1/9/2006
<b>MATERIAL:</b> BRASS FM ALLOY C36000	<b>CHKD. BY:</b> JapKc
	<b>ENG. 1 APPR:</b> SamG
	<b>ENG. 2 APPR:</b> IVA
	<b>MANUFACT.:</b> IVA
<b>FINISH:</b> CLEAN ONLY	<b>DRAWING NO:</b> B 08441 002A74601

COMPANY CONFIDENTIAL. INFORMATION CONTAINED HEREIN IS CONFIDENTIAL. IT IS THE PROPERTY OF SPX CORPORATION. IT IS TO BE USED SOLELY FOR THE PURPOSE PROVIDED, AND IT IS NOT TO BE DISCLOSED TO OTHERS WITHOUT THE PRIOR WRITTEN CONSENT OF SPX CORPORATION.  
 UNLESS OTHERWISE SPECIFIED, ALL ALUMINIUM, COPPER, AND BRASS WELDING MUST COMPLY WITH A-62700, SECT. XIV "PRODUCTION WELDING PROCEDURES". STRUCTURAL STEEL WELDING MUST COMPLY WITH "AWS 1.1 CURRENT REVISION".